

WARNING

This unit is supplied for low voltage switching. It should not be used to switch 240v unless it is mounted in an earthed enclosure.

This enclosure is not rated for external use and should be used indoors only.

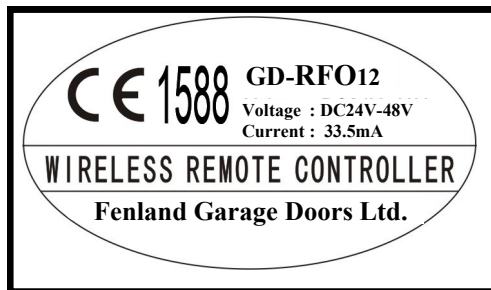
If the unit is connected to any machinery, that machinery will operate during the coding sequence, therefore keep the operating area clear during coding.

Keep the handsets out of reach of children and keep it in such a way that the buttons can not be pressed unintentionally.

Only operate the door when it is within view and you are able to see that it is not obstructed. We recommend this unit is fitted by a qualified Door Systems Engineer.

WARRANTY

This unit is guaranteed for 2 years against any defects. Full conditions are available on request



Bexwell Business Estate
Downham Market
PE38 9LT



Instructions for GD Receiver Kit

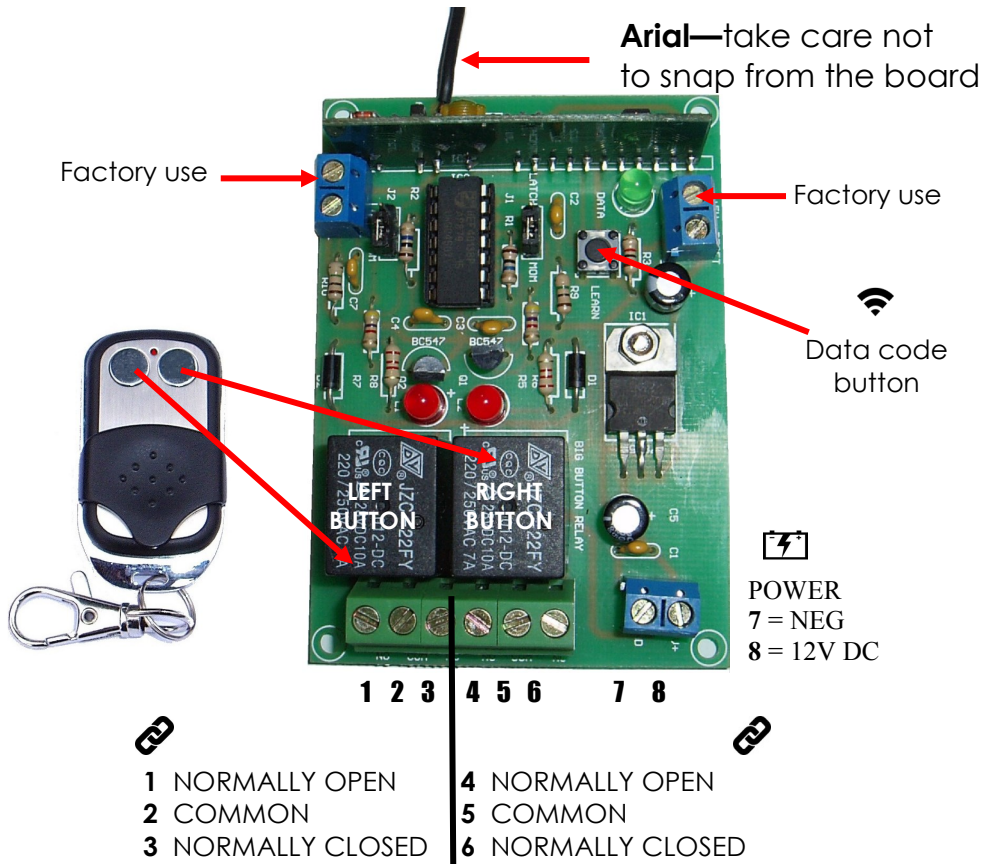


01366 382815

help@thegaragedoorguru.com

www.thegaragedoorguru.co.uk





STEP 1



Powering your GD Kit

Plug in power supply

Using the plug supplied with the GD Kit, connect it to terminals 7 & 8 on the GD Kit.

Connect the Black wire to terminal 7 (Neg) and White wire to terminal 8 (12v DC)



STEP 2



Pairing your remotes

EQUIPMENT CONNECTED TO THIS UNIT MAY OPERATE DURING THE CODING PROCESS

Find the "Data" button on the control board (Below the green LED)
Press the "Data" button 3 times
Press and hold any button on the remote for 10 seconds
Release the button
Press any button on the remote
The Green/Red LEDs will now illuminate indicating the remote is paired
Repeat process for second remote

To delete all remotes: Press and hold the "Data" button for 10 seconds

STEP 3



Connecting your GD Kit

Momentary contact — Impulse open/close (most garage doors)

The GD Kit has momentary contact terminals to send an impulse to your garage door operator. One press of a button will send the door up, pressing it again will stop the door opening, a third press will then bring the door back down again.

Connect one end of the 2-core bell wire supplied to terminals 1 & 2 on your GD Kit then connect the other end to the momentary contact terminals on your operator.

Roller Shutters/Separate Up & Down buttons

If you have a separate button for up and down (common on Roller Shutter control boards) then you will need to have a separate button for up and down.

Using the 2-core bell wire supplied, cut it into 2 pieces.

Using the first piece connect it to terminal 1 and terminal 2 on the GD Kit, then connect the other end to Common and Open on your control board, this will be the open button.

Using the second piece connect it to terminal 4 and terminal 5 on the GD Kit, then connect the other end to Common and Close on your control board, this will be the close button.



Helpful tip!

If you have a manual push button on the wall of your garage it is usually connected via a 2-core bell wire.

Follow this wire back to your operator to help identify the momentary contact terminals on your operator.